

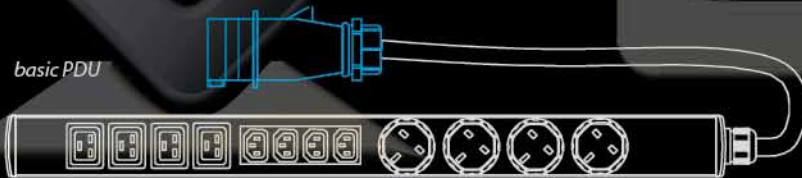
INTELLIGENT POWER

The CONTEG Intelligent Power product range comprises three different technologies to address the needs of the higher density computing user. The range comprises power strips which feature either no intelligence (basic PDUs), the ability to remotely monitor electric current per strip using Ethernet and IP (monitored PDU) or the ability to fully manage power strips and groups of power strips via the network (managed PDUs). CONTEG Intelligent Power offers a combination of outlets, including national outlet styles combined with industrial outlets and high amperage inputs. Input plug styles are the EN309 16A and 32A type or the IEC-C20 which is also rated for 16A operation.

Intelligent Power Basic

INTELLIGENT POWER BASIC Strips are designed for high-density, mission-critical server applications. The CONTEG Basic power strip provides reliable power to the cabinet for both standard and Blade server environments.

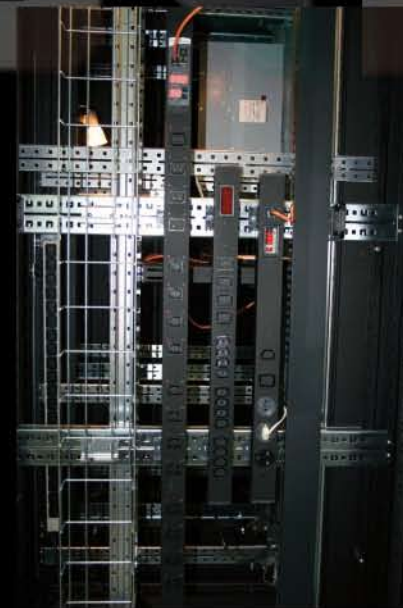
basic PDU



POWER DISTRIBUTION UNITS - BASIC¹

Code	Input Plug	Length	Type 1 Outlet	Qty	Type 2 Outlet	Qty	Rating	Mounting
IP-BA-308UK8C916	EN 60309	3m	UK	8	C19	8	16A	0U
IP-BA-312UK8C316	EN 60309	3m	UK	12	C13	8	16A	0U
IP-BA-308SH8C916	EN 60309	3m	SCHUKO	8	C19	8	16A	0U
IP-BA-312SH8C316	EN 60309	3m	SCHUKO	12	C13	8	16A	0U
IP-BA-308UT8C916	EN 60309	3m	UTE	8	C19	8	16A	0U
IP-BA-312UT8C316	EN 60309	3m	UTE	12	C13	8	16A	0U
IP-BA-320C34C916	EN 60309	3m	C13	20	C19	4	16A	0U
IP-BA-C20C34C916	EN 60309 C20	3m	C13	20	C19	4	16A	0U
IP-BA-C08C300016	EN 60309 C20	3m	C13	8	None	0	16A	1U
IP-BA-320C34C932	EN 60309	3m	C13	20	C19	4	32A	0U

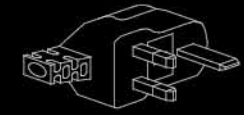
¹ other units including 3 phase available on request



Socket Types:



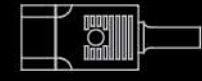
UK



UK



IEC320 C13



IEC320 C14



IEC320 C19



IEC320 C20



SCHUKO



SCHUKO - GERMAN



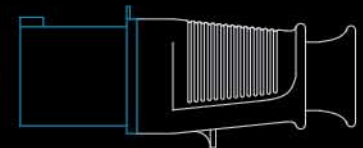
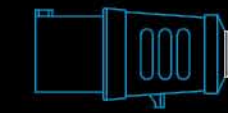
UTE



UTE - FRENCH



EN60309 16A

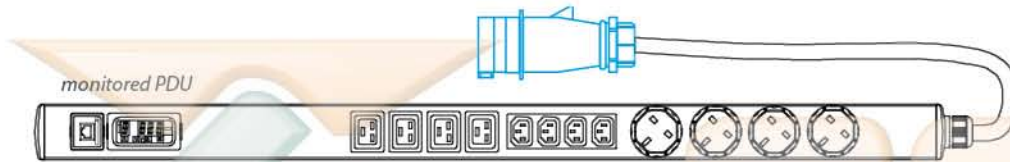


EN60309 32A

Intelligent Power Monitored

INTELLIGENT POWER MONITORED Strips feature a local easy to read ammeter on the outlet strip along with the ability to monitor the current draw of outlets remotely over an Ethernet connection. The user can aggregate the information from thousands of Intelligent Power Strips in one location. Designed for high-density, mission-critical server applications, the CONTEG Monitored Power strips provide reliable power to the cabinet for both standard and Blade server environments.

POWER DISTRIBUTION UNITS - MONITORED											
Code	Input Plug	Length	Type 1 Outlet	Qty	Type 2 Outlet	Qty	Rating	Mounting	Dimensions in mm		
									H	W	D
IP-MI-308UK8C916	EN 60309	3m	UK	8	C19	8	16A	0U	1218	57	48
IP-MI-312UK8C316	EN 60309	3m	UK	12	C13	8	16A	0U	1322	57	48
IP-MI-308SH8C916	EN 60309	3m	SCHUKO	8	C19	8	16A	0U	1218	57	48
IP-MI-312SH8C316	EN 60309	3m	SCHUKO	12	C13	8	16A	0U	1322	57	48
IP-MI-308UT8C916	EN 60309	3m	UTE	8	C19	8	16A	0U	1218	57	48
IP-MI-312UT8C316	EN 60309	3m	UTE	12	C13	8	16A	0U	1322	57	48
IP-MI-320C34C916	EN 60309	3m	C13	20	C19	4	16A	0U	1097	57	48
IP-MI-C20C34C916	EN 60309 C20	3m	C13	20	C19	4	16A	0U	1097	57	48
IP-MI-C08C300016	EN 60309 C20	2m	C13	8	x	0	16A	19" 1U	45	482	110
IP-MI-320C34C932	EN 60309	3m	C13	20	C19	4	32A	0U	1428	57	48



Intelligent Power Managed

INTELLIGENT POWER MANAGED Strips represent the leading edge in functionality available in a power strip. Employing a server-grade microprocessor, this product has unprecedented management and monitoring capabilities available through the built in web-server and firewall.

- Switch individual outlets on or off to enable remote reboot of servers
- Virtual grouping of outlets for single-click reboot of multi-corded servers
- Single-click control of entire racks or non-critical loads
- Current Monitoring per outlet
- User defineable sequencing of outlets for reboot

Designed for high-density, mission-critical server applications, the Conteg Managed Power strips provide reliable power to the cabinet for both standard and Blade server environments.

POWER DISTRIBUTION UNITS - MANAGED											
Code	Input Plug	Length	Type 1 Outlet	Qty	Type 2 Outlet	Qty	Rating	Mounting	Dimensions in mm		
									H	W	D
IP-MA-308UK8C916	EN 60309	3m	UK	8	C19	8	16A	0U	1413	57	75
IP-MA-312UK8C316	EN 60309	3m	UK	12	C13	8	16A	0U	1686	57	75
IP-MA-308SH8C916	EN 60309	3m	SCHUKO	8	C19	8	16A	0U	1413	57	75
IP-MA-312SH8C316	EN 60309	3m	SCHUKO	12	C13	8	16A	0U	1686	57	75
IP-MA-308UT8C916	EN 60309	3m	UTE	8	C19	8	16A	0U	1593	57	75
IP-MA-312UT8C316	EN 60309	3m	UTE	12	C13	8	16A	0U	1686	57	75
IP-MA-320C300016	EN 60309	3m	C13	20	None	0	16A	0U	1798	57	48
IP-MA-C20C300016	EN 60320 C20	3m	C13	20	None	0	16A	0U	1772	57	48
IP-MA-312C34C916	EN 60309	3m	C13	12	C19	4	16A	0U	1426	57	116
IP-MA-312C34C932	EN 60309	3m	C13	12	C19	4	32A	0U	1426	57	116

