



 BROCHURE

INTEGRATED SYSTEMS FOR IT SPACES

↳ We will provide everything you need

Solutions for Server Rooms and Cabling Installations

We offer a wide range of IT solutions, from free-standing, wall-mounted and SOHO racks to cooling and ventilation, monitoring and security, cable management, and power supplies.

FREE-STANDING RACKS

PREMIUM Server RF1 is a new and unrivaled free-standing rack designed for the most demanding customers and modern data centers. It is compatible with all CONTEG cooling units, airflow optimization, and flexible cable management systems, as well as with many additional systems, such as access systems, PDUs, smart power, and fire extinguishing systems.

↳ Main advantages

- ✓ High load capacity – up to 2,000 kg – suitable for heavy IT equipment
- ✓ Robust welded frame with patented design
- ✓ Unmatched 86% door perforation rate; single- or double-leaf design
- ✓ Two types of vertical rails with U position markings and depth adjustment
- ✓ Additional 12/24U in 800 mm cabinets with A-type vertical rails
- ✓ Easy conversion from 19" to 21" or 23" in 800 mm racks with V-type rails
- ✓ Maximum usable internal space of the rack

WALL-MOUNTED AND SOHO RACKS

Thanks to their compact size, our Wall-Mounted and SOHO Racks are ideal for small offices and homes. We offer models with front and rear access to equipment; some include removable, lockable side panels. Our portfolio also includes SOHO In-Wall ACP racks – an aesthetic solution for home networks.

COLOR:  RAL 9005  RAL 7035  RAL 5010 *  RAL 2004 *

* Contact our Sales Department for more information about these color options.



RF1-42-80/12A



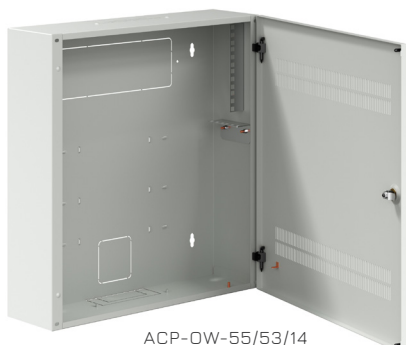
RUN-09-60/60



RUD-09-60/50



ACP-IW-55/53/14



ACP-OW-55/53/14



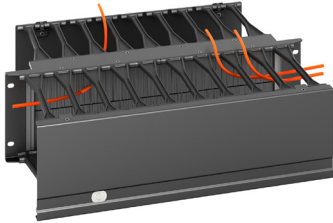
REH-09-30/26



RQN-15-60/60

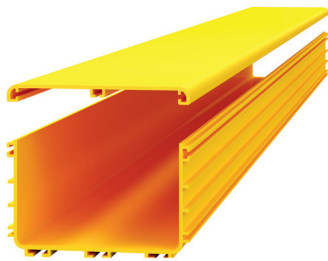
Selected Accessories

We provide essential rack components that simplify installation and protect equipment. It includes high-density and standard cable management to organize and preserve cable bend radii. The OptiWay system provides safe routing for fragile fiber-optic links. Ventilation units and fans improve cooling and airflow. Storage options — fixed and pull-out shelves, drawers, and rails — secure devices.



HIGH DENSITY WIRE MANAGEMENT

The high-density binding system keeps cabling precisely organized while preserving the bend radii of modern data cables to maximize high-speed network throughput. Its innovative ribbed design provides optimal cable radii and easy routing, plus user-friendly mounting and operation. Snap-on covers can be flipped up or removed completely without tools, improving access to the cabling.



OPTICAL PATHWAY SYSTEM OPTIWAY

The OptiWay system provides a safe, easy-to-use, and cost-effective routing solution for fragile fiber-optic cables. It enables optical cabling between devices, offers physical protection, and maintains favorable bend radii essential for optical performance.



STANDARD CABLE MANAGEMENT

Proper cable management organization is an integral part of any rack installation. Wire-Management panels with plastic brackets are used for installation and horizontal routing of cables within the cabinet. The panels are attached to 19" vertical extrusions.



VENTILATION UNITS

Ventilation units improve cooling of equipment in cabinets by using room air. They are mounted horizontally on 19" vertical profiles or on the cabinet's top or bottom frame. Units with 2-9 fans are available.



STORAGE SYSTEMS

Storage systems are used for storing devices inside the rack. We offer a wide range of accessories for products in our portfolio, including fixed shelves, pull-out shelves, drawers and holders and supporting rails and adapters.

RAMOS – Intelligent Monitoring System

RAMOS monitors environmental conditions (temperature, humidity, water leakage, smoke, etc.) in data centers, server rooms, or individual racks. It can also be used for access control.



RAMOS Ultra ACS



RAMOS Plus

RAMOS Optimax



RAMOS comprises hardware and the CONTEG Pro Server software. Hardware is offered in three intelligent main unit versions, each with different functionality, sensor counts, and I/O options. CONTEG Pro Server provides a user-friendly web interface for sensor configuration and data collection, multiple notification methods (SNMP, e-mail, SMS, MMS, SMTP), and extensive graphical displays of monitored values.

	RAMOS Plus/Plus GSM	RAMOS Optimax/Optimax GSM	RAMOS Ultra/Ultra ACS
Intelligent ports (inputs)	4	8 (10)	8/2
Number of open virtual sensors (max. with licenses)	5 (40)	10 (80)	80
Expandable expanders	No	Up to 150 sensors including virtual	Up to 500 sensors
GSM function (SMS and call)	Only GSM version	Only GSM version	With USB modem
Protocols	SNMP (1, 2 and 3) Modbus TCP	SNMP (1, 2 and 3) Modbus TCP Modbus RTU with adapter	SNMP (1, 2 and 3) Modbus TCP and RTU
Suitable for	Single rack	Multiple racks or server room	Data Center



Intelligent ports

Connect via LAN cables;
auto-detect and power accessories.



Virtual sensors

Monitor other devices and read parameters
via protocols (PING, SNMP, etc.);
supports integration of third-party devices
(PDUs, UPS, cooling, etc.).



Notifications

Email, protocol commands,
voice messages, SMS, and more.



Easy extensibility

Expandable with an expander for RAMOS
Optimax and RAMOS Ultra.



Remote control

Configure and control devices
via CONTEG Pro Server or the web UI.



Acoustic Siren With Flashing Light

Combination sensor that emits
a loud piercing sound and a visual
blinking strobe light.



Programmable Display With Temperature Sensor

Shows up to 8 parameters from
any intelligent or virtual sensor,
and measures one temperature.

Electronically Controlled Door Handle With Built-In Card Reader

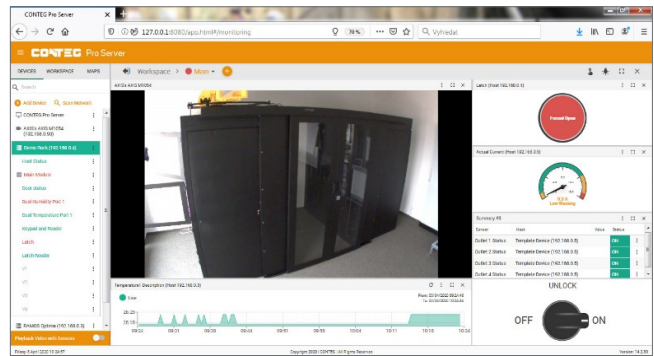
Including the door contact, enables
direct connection to the intelligent
port of the RAMOS Optimax or
RAMOS Plus main monitoring unit.

Thermal and Humidity Mapping

Sensors for comprehensive
in-rack environmental monitoring
detect hotspots and help optimize
IT hardware placement and
cooling performance.

CONTEG PRO SERVER

DCIM software for central monitoring and management using RAMOS hardware. It monitors physical infrastructure, manages user access rights, and controls cameras and sensors. It also monitors integrated IT devices locally and remotely (PDUs, UPSs, IP cameras, etc.) and sends alarm notifications via SMS, MMS, e-mail, and event-based channels.



Selected Accessories



THERMAL AND HUMIDITY MAPPING

Sensors for comprehensive in-rack environmental monitoring detect hotspots and help optimize IT hardware placement and cooling performance. Mapping sensors daisy-chain on a single cable and measure temperature at three levels — upper, middle, and lower — at the front, rear, or both sides, and report level-by-level temperature differentials. A combined version with humidity sensing is also available. Compatible with RAMOS Plus and RAMOS Optimax.



TEMPERATURE AND HUMIDITY SENSOR

A temperature and humidity sensor for in-rack use, measuring -55°C to $+75^{\circ}\text{C}$ and 0–100% RH. Sensor distance can be extended up to 300 m using Cat 5/6 patch cable. Compatible with RAMOS Ultra, RAMOS Ultra ACS, RAMOS Plus, and RAMOS Optimax.



PROGRAMMABLE DISPLAY

The display can be programmed to display data from any intelligent or virtual sensor and display up to 8 parameters. Compatible with RAMOS Plus and RAMOS Optimax.



ROPE WATER-LOCATING SENSOR

Extendable detection rope up to 50 m; pinpoints the contact location of liquids. Can be connected to the Ramos Optimax or Ramos Ultra monitoring system using intelligent ports (RJ-45).



SMOKE DETECTOR

UL-certified smoke detector for essential fire detection.

Power Distribution Units – PDUs

Our rack PDUs for high-density IT environments come in three types: Managed PDUs, which allow remote control of individual or grouped outlets via a network; Monitored PDUs, which provide remote monitoring of current and energy consumption; and Basic PDUs with no additional features. PDUs are available with combinations of national and industrial outlet types.



Safe



Different sizes



High metering
precision



Remote
control

Overview of PDUs	Managed	Monitored	Basic
Measurement (V, A, f, PF, kVA, kW, kWh)	✓	✓	–
Input measurements	✓	✓	–
Per-outlet measurements (POM version)	✓	✓	–
Individual outlet switching	✓	–	–
Primary-secondary coupling	✓	✓	–
SNMP	✓	✓	–
Modbus TCP	✓	✓	–

MANAGED PDUS

- ✓ Remote control over individual outlets (switching on/off)
- ✓ Monitoring of energy consumption from individual outlets (PDU versions with POM designation)
- ✓ Available in different colors
- ✓ Connection: 1-phase 230 V AC or 3-phase 230/400 V AC, 16 A or 32 A
- ✓ Outlets on PDUs: in different numbers according to the type IEC320 C13, IEC320 C19
- ✓ Input plug: EN 60309, IEC320 C20

MONITORED PDUS

- ✓ Monitoring of energy consumption from individual outlets (PDU versions with POM designation)
- ✓ Available in different colors
- ✓ Connection: 1-phase 230 V AC or 3-phase 230/400 V AC, 16 A or 32 A
- ✓ Outlets on PDUs: in different numbers according to the type IEC320 C13, IEC320 C19
- ✓ Input plug: EN 60309, IEC320 C20

BASIC PDUS

- ✓ Versions for horizontal (on 19" and 10" extrusions) and vertical mounting
- ✓ Connection: 1-phase 230 V AC or 3-phase 230/400 V AC, 16 A or 32 A
- ✓ Output types: UTE, SCHUKO, UK, IEC320 C13, IEC320 C19 (other types possible on request)
- ✓ Max. load: 16 A, 250 V – for SCHUKO/UTE or IEC320 C19; 13 A, 250 V – for UK; 10 A, 250 V – for IEC320 C13

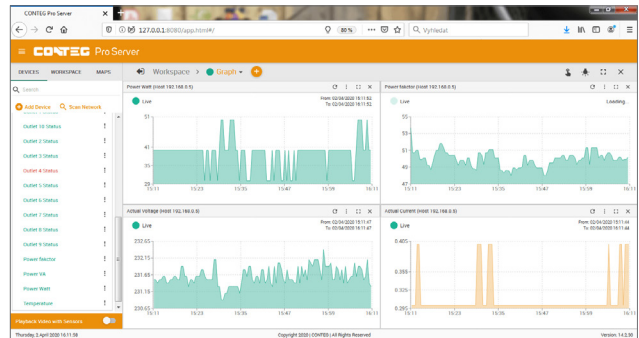
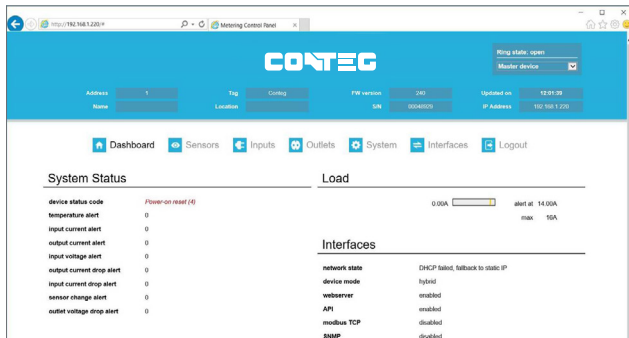


User-Friendly Web Interface

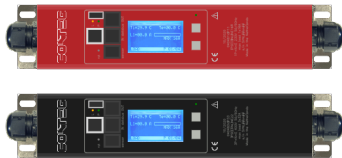
Enables remote configuration of PDU parameters and control of individual outlets. Provides access to all data and statistics to optimize infrastructure management.

PDU Integration into Monitoring Systems

Monitored and managed PDUs connect to CONTEG Pro Server via SNMP (v1, v2c, v3), Modbus, API, or other third-party systems.



Selected Accessories



INLINE METERS

1-phase and 3-phase inline power meters with illuminated displays measure parameters on the lead-in cable to basic PDUs and are easy to connect into existing circuits.



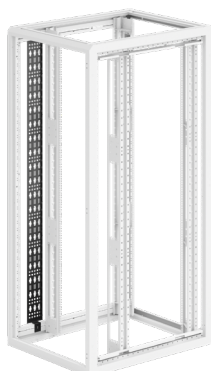
OUTPUT POWER CABLES

Available in multiple colours and lengths, with various input/output connector types, optional P-Lock anti-unplug protection, and customisable configurations for specific installations.



RETENTION SLEEVES

Includes sleeves for C13/C19 outlets and C20 inlets, plus locking clips for C13 outlets (compatible with some basic PDUs).



BRACKETS FOR VERTICAL PDU INSTALLATION

Mount up to two basic, monitored, or managed PDUs side-by-side on A-type 19" extrusions. Perforations allow cable management; bracket position is adjustable to minimize used space. Installation requires only two screws.



10.2025

www.conteg.com

CONTEG, spol. s r.o.

Stetkova 1638/18, 140 00 Prague 4, Czech Republic

Tel.: +420 565 300 358

info@conteg.com